



**IKA<sup>®</sup>**

# Product overview 09



Designed  
to work perfectly

# IKA® Mixing

Magnetic stirrers with heating



| RH basic 1

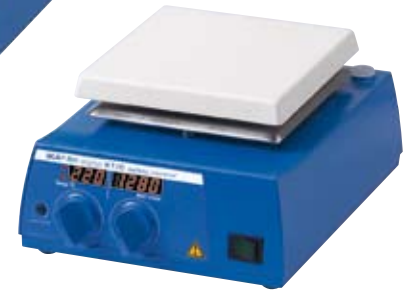


| RH basic 2

hot



| RH basic KT/C safety control



| RH digital KT/C safety control

	RH basic 1 IKAMAG®	RH basic 2 IKAMAG®	RH basic KT/C safety control IKAMAG®	RH digital KT/C safety control IKAMAG®
<b>Technical data</b>				
Stirring quantity (H <sub>2</sub> O)	5 l	10 l	15 l	15 l
Motor rating input / output	15 / 2 W	15 / 2 W	15 / 2 W	15 / 2 W
Speed display	scale (0 - 6)	scale (0 - 6)	scale (0 - 6)	digital
Speed range	150 – 1.500 min <sup>-1</sup>	100 – 2.000 min <sup>-1</sup>	100 – 2.000 min <sup>-1</sup>	100 – 2.000 min <sup>-1</sup>
Max. magnetic bar (L x Ø)	40 x 8 mm	40 x 8 mm	40 x 8 mm	40 x 8 mm
<b>Heating function</b>				
Heat output	400 W	400 W	500 W	500 W
Heating plate temperature range	RT – 320 °C	RT – 320 °C	RT – 320 °C	RT – 320 °C
Heating plate setting accuracy	± 10 K	± 10 K	± 10 K	± 1 K
Adjustable safety circuit	–	–	100 – 400 °C	100 – 400 °C
Control accuracy with sensor	–	–	ETS-D5 ± 0,5 K ETS-D6 ± 0,2 K	ETS-D5 ± 0,5 K ETS-D6 ± 0,2 K
<b>Heating plate</b>				
Material	stainless steel (AISI 304)	stainless steel (AISI 304)	stainless steel white coated	stainless steel white coated
Dimensions	Ø 125 mm	Ø 125 mm	130 x 130 mm	130 x 130 mm
<b>General data</b>				
Dimensions (W x D x H)	168 x 220 x 105 mm	168 x 220 x 105 mm	168 x 220 x 105 mm	168 x 220 x 105 mm
Weight	2,4 kg	2,4 kg	2,4 kg	2,4 kg
Protection class acc. to DIN EN 60529	IP 21	IP 21	IP 21	IP 21
Interface	–	–	–	–
Ident. No. (230 V / 115 V)	3479000 / 3479026	3339000 / 3339001	3207100 / 3207101	3207000 / 3207001



new

RCT basic safety control  
incl. PT 1000 temperature sensor



new

RET basic safety control  
incl. PT 1000 temperature sensor



RET control-visc C safety control



RET control-visc safety control

RCT basic safety control IKAMAG®	RET basic safety control IKAMAG®	RET control-visc C safety control IKAMAG®	RET control-visc safety control IKAMAG®
20 l	20 l	20 l	20 l
16 / 9 W	16 / 9 W	12 / 5 W	12 / 5 W
digital	digital	digital	digital
50 – 1.500 min <sup>-1</sup>	50 – 1.700 min <sup>-1</sup>	0 – 1.500 min <sup>-1</sup>	0 – 1.500 min <sup>-1</sup>
80 x 10 mm	80 x 10 mm	80 x 10 mm	80 x 10 mm
600 W	600 W	600 W	600 W
RT – 310 °C	RT – 340 °C	RT – 340 °C	RT – 340 °C
± 1 K	± 1 K	± 0,5 K	± 0,5 K
50 – 360 °C	50 – 360 °C	50 – 350 °C	50 – 350 °C
PT 1000 ± 1K / ETS-D5 ± 0,5 K ETS-D6 ± 0,2 K	PT 1000 ± 1K / ETS-D5 ± 0,5 K ETS-D6 ± 0,2 K	± 0,2 K	± 0,2 K
aluminium alloy	stainless steel	stainless steel white coated	stainless steel
Ø 135 mm	Ø 135 mm	Ø 135 mm	Ø 135 mm
160 x 270 x 85 mm	160 x 270 x 95 mm	160 x 280 x 97 mm	160 x 280 x 97 mm
2,5 kg	2,5 kg	2,8 kg	2,8 kg
IP 42	IP 42	IP 42	IP 42
–	–	RS 232 / analog	RS 232 / analog
3810000 / 3810001	3622000 / 3622001	3364100 / 3364101	3364000 / 3364001

# IKA® Mixing

Magnetic stirrers with heating

4

hot



C-MAG HS 4



C-MAG HS 7



C-MAG HS 10

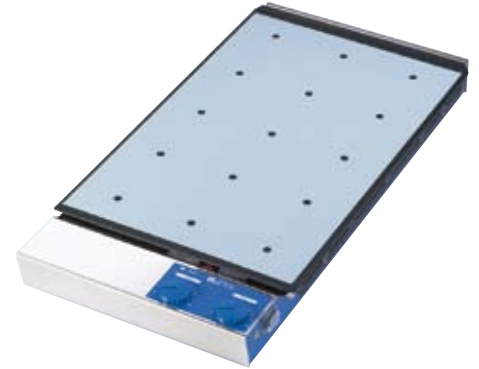
	C-MAG HS 4	C-MAG HS 7	C-MAG HS 10
<b>Technical data</b>			
Stirring quantity (H <sub>2</sub> O)	5 l	10 l	15 l
Motor rating input / output	15 / 1,5 W	15 / 1,5 W	15 / 1,5 W
Speed display	scale (0 - 6)	scale (0 - 6)	scale (0 - 6)
Speed range	100 – 1.500 min <sup>-1</sup>	100 – 1.500 min <sup>-1</sup>	100 – 1.500 min <sup>-1</sup>
Max. magnetic bar (L x Ø)	40 x 8 mm	50 x 8mm	80 x 10 mm
<b>Heating function</b>			
Heat output	250 W	1000 W	1500 W
Heating plate temperature range	50 °C – 500 °C	50 °C – 500 °CC	50 °C – 500 °C
Heating plate setting accuracy	± 10 K	± 10 K	± 10 K
Safety circuit	(fixed) 550 °C	(fixed) 550 °C	(fixed) 550 °C
Control accuracy with sensor	—	ETS-D5 ± 0,5 K ETS-D6 ± 0,2 K	ETS-D5 ± 0,5 K ETS-D6 ± 0,2 K
<b>Heating plate</b>			
Material	glass - ceramics	glass - ceramics	glass - ceramics
Dimensions	120 x 120 mm	200 x 200	280 x 280 mm
<b>General data</b>			
Dimensions (W x D x H)	150 x 260 x 105 mm	220 x 330 x 105 mm	300 x 415 x 105 mm
Weight	3 kg	5 kg	6 kg
Protection class acc. to DIN EN 60529	IP 21	IP 21	IP 21
Ident. No. (230 V / 115 V)	3581000 / 3581026	3581200 / 3581226	3581400 / 3581426



| RT 5 power



| RT 10 power



| RT 15 power

	RT 5 power IKAMAG®	RT 10 power IKAMAG®	RT 15 power IKAMAG®
<b>Technical data</b>			
Stirring positions	5	10	15
Max. stirring quantity per stirrer (H <sub>2</sub> O)	0,4 l	0,4 l	0,4 l
Distance between stirring places	90 mm	90 mm	90 mm
Motor rating input / output	7,2 / 1,8 W	14,4 / 3,6 W	21,6 / 5,4 W
Speed display	scale (1 – 10)	scale (1 – 10)	scale (1 – 10)
Speed range	0 – 1.100 min <sup>-1</sup>	0 – 1.100 min <sup>-1</sup>	0 – 1.100 min <sup>-1</sup>
Deviation for individual stirring positions	5 %	5 %	5 %
Max. magnetic bar (L x Ø)	30 x 8 mm	30 x 8 mm	30 x 8 mm
<b>Heating function</b>			
Heat output	175 W	375 W	580 W
Temperature range (surface)	RT – 120 °C	RT – 120 °C	RT – 120 °C
Heat control	scale (1 – 10)	scale (1 – 10)	scale (1 – 10)
Temperature consistency in the medium	± 2 K	± 2 K	± 2 K
<b>Set-up plate</b>			
Material	silicone	silicone	silicone
Dimensions	120 x 450 mm	180 x 450 mm	270 x 450 mm
<b>General data</b>			
Dimensions (W x D x H)	138 x 552 x 65 mm	198 x 552 x 65 mm	288 x 552 x 65 mm
Weight	3 kg	4,2 kg	6 kg
Protection class acc. to DIN EN 60529	IP 42	IP 42	IP 42
Ident. No. (230V / 115V)	2930300 / 2930301	2930500 / 2930501	2930700 / 2930701

# IKA® Mixing

## Synthese package

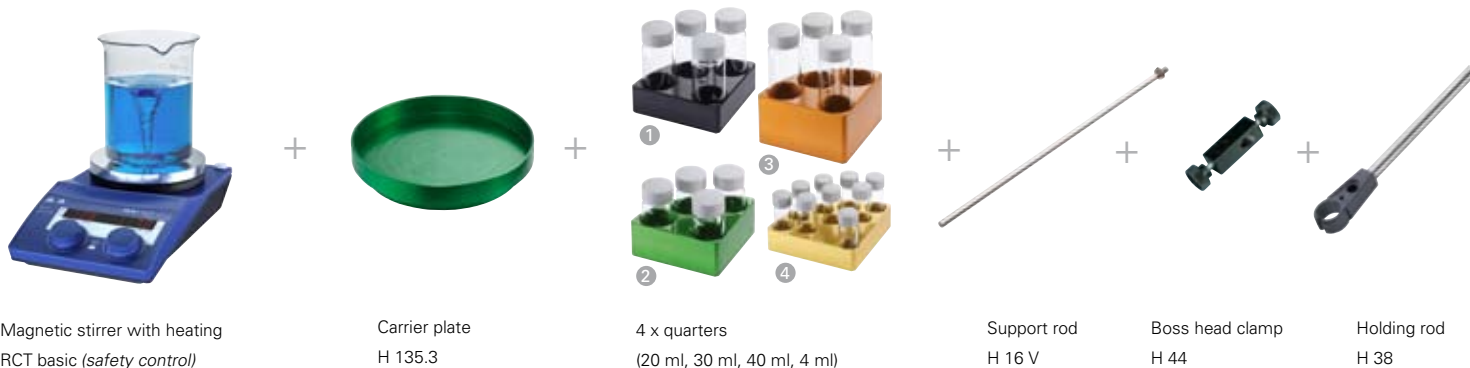
### Quarter System

The carrier plate can be fitted with four identical or differing aluminium quarters, allowing up to 36 reaction vessels to be processed at the same time. The aluminium quarters guarantee optimal heat transfer throughout the process with no interference to the magnetic field. This ensures that all the containers are processed at the same temperature and that the contents are uniformly mixed. The different colors used for the various quarters makes them easier to distinguish.

- Multiple syntheses with only one magnetic stirrer
- Uniform mixing in every vessel
- High-precision thermal conduction directly into quarters
- Same temperature in all vessels
- Wide range of applications thanks to exchangeable quarters
- Safe and clean working



### RCT Synthese Package 1



Magnetic stirrer with heating  
RCT basic (safety control)

Carrier plate  
H 135.3

4 x quarters  
(20 ml, 30 ml, 40 ml, 4 ml)

Support rod  
H 16 V

Boss head clamp  
H 44

Holding rod  
H 38

	Carrier plate H 135.3	Quarter (20 ml) H 135.310	Quarter (30 ml) H 135.311	Quarter (40 ml) H 135.312	Quarter (4 ml) H 135.313	Quarter (8 ml) H 135.314	Quarter (16 ml) H 135.315
<b>Technical data</b>							
Hole size	Ø 135 mm	4 x 20 ml	4 x 30 ml	4 x 40 ml	9 x 4 ml	8 x 8 ml	4 x 16 ml
Hole depth	-	24 mm	30 mm	43 mm	19 mm	25 mm	32 mm
Vessel size (Ø x L)	-	28 x 60 mm	28 x 73 mm	28 x 98 mm	15 x 45 mm	17 x 60 mm	21 x 70 mm
Color	green	black	green	orange	gold	blue	red
Material	aluminum	aluminum	aluminum	aluminum	aluminum	aluminum	aluminum
Ident. No.	3904000	3904100	3904200	3904300	3904400	3904500	3904600



new



### Reaction Block System

The reaction block allows syntheses to be carried out in round flasks at temperatures of up to 180°C. This system ensures optimal heat transfer from the heating plate directly into the medium. Uniform mixing is also guaranteed because there is no interference to the magnetic field from the aluminum blocks. The Teflon coating prevents burning and ensures that working with the system is safe. Reaction blocks are available in three standard sizes. These can be adapted to various flask sizes using the appropriate inserts.

- Syntheses in round flasks at up to 180 °C
- Uniform mixing
- High-precision thermal conduction directly into the reaction block
- Teflon coating protects against burning
- Wide range of applications thanks to exchangeable inserts
- Safe and clean working

### RCT Synthese Package 2



+



+



+



+



+



Magnetic stirrer with heating  
RCT basic (safety control)

Reaction block, 500 ml  
H 135.5

Insert, 250 ml  
H 135.511

Support rod  
H 16 V

Boss head clamp  
H 44

Holding rod  
H 38

	Reaction block (100 ml) H 135.4	Reaction block (500 ml) H 135.5	Reaction block (1000 ml) H 135.6
Technical			
Material	aluminum & teflon	aluminum & teflon	aluminum & teflon
Ident. No.	3904700	3905100	3905600

	Insert (10 ml ) H 135.410	Insert (25 ml ) H 135.411	Insert (50 ml ) H 135.412	Insert (200 ml ) H 135.510	Insert (250 ml ) H 135.511	Insert (300 ml ) H 135.512	Insert (500 ml ) H 135.610
Technical							
Color	gold	blue	red	turquoise	clear	black	purple
Material	aluminum	aluminum	aluminum	aluminum	aluminum	aluminum	aluminum
Ident. No.	3904800	3904900	3905000	3905200	3905300	3905400	3905500

# IKA® Mixing

Magnetic stirrers without heating

8

new



| topolino



| Mini MR standard



| COLOR SQUID Curly  
Further motifs see page 26

new



| topolino mobile  
battery-powered



| lab disc white  
Further motifs see page 27



| BIG SQUID Strawberry  
Further motifs see page 27

	topolino / topolino mobil IKAMAG®	Mini MR standard IKAMAG®	lab disc IKAMAG®	COLOR SQUID IKAMAG®	BIG SQUID IKAMAG®
<b>Technical data</b>					
Stirring quantity (H <sub>2</sub> O)	0,25 l	0,8 l	0,8 l	0,8 l	1,5 l
Motor rating input / output	1,1 / 0,8 W	4 / 0,5 W	5 / 3 W	2 / 1 W	2 / 1 W
Speed range	300 - 1.800 rpm	0 - 1.500 min <sup>-1</sup>	15 - 1.500 min <sup>-1</sup>	0 - 1.500 min <sup>-1</sup>	0 - 1.500 min <sup>-1</sup>
Reversion of rotation direction (switchable)	-	-	every 30 s	-	-
Max. magnetic bar (L x Ø)	30 x 8 mm	30 x 8 mm	30 x 8 mm	30 x 8 mm	30 x 8 mm
<b>Set-up plate</b>					
Material	PP	polyester	polyester	glass	glass
Dimensions	Ø 80 mm	115 x 115 mm	Ø 90 mm	Ø 110 mm	Ø 160 mm
<b>General data</b>					
Dimensions (W x D x H)	95 x 115 x 40 / Ø 140 x 40 mm	115 x 130 x 40 mm	114 x 161 x 12 mm	130 x 135 x 50 mm	180 x 180 x 48 mm
Weight	0,3 / 0,32 kg	0,23 kg	0,3 kg	0,48 kg	1 kg
Protection class acc. to DIN EN 60529	IP 21 / IP 20	IP 42	IP 65	IP 54	IP 54
Ident. No. (100 - 240 V)	3368000 / 3381300	2677000	3277700	3576000	3573200

hot



| C-MAG MS 4



| C-MAG MS 7



| C-MAG MS 10

	C-MAG MS 4	C-MAG MS 7	C-MAG MS 10
<b>Technical data</b>			
Stirring quantity (H <sub>2</sub> O)	5 l	10 l	15 l
Motor rating input / output	15 / 1,5 W	15 / 1,5 W	15 / 1,5 W
Speed display	scale (0 - 6)	scale (0 - 6)	scale (0 - 6)
Speed range	100 – 1.500 min <sup>-1</sup>	100 – 1.500 min <sup>-1</sup>	100 – 1.500 min <sup>-1</sup>
Max. magnetic bar (L x Ø)	40 x 8 mm	50 x 8 mm	80 x 10 mm
<b>Set-up plate</b>			
Material	glass - ceramics	glass - ceramics	glass - ceramics
Dimensions	120 x 120 mm	200 x 200	280 x 280 mm
<b>General data</b>			
Dimensions (W x D x H)	150 x 260 x 105 mm	220 x 330 x 105 mm	300 x 415 x 105 mm
Weight	3 kg	5 kg	6 kg
Protection class acc. to DIN EN 60529	IP 21	IP 21	IP 21
Ident. No. (230V / 115V)	3582200 / 3582226	3582400 / 3582426	3582600 / 3582626

# IKA® Mixing

Magnetic stirrers without heating

10



| KMO 2 basic



| Midi MR 1 digital



| REO basic



| Maxi MR 1 digital

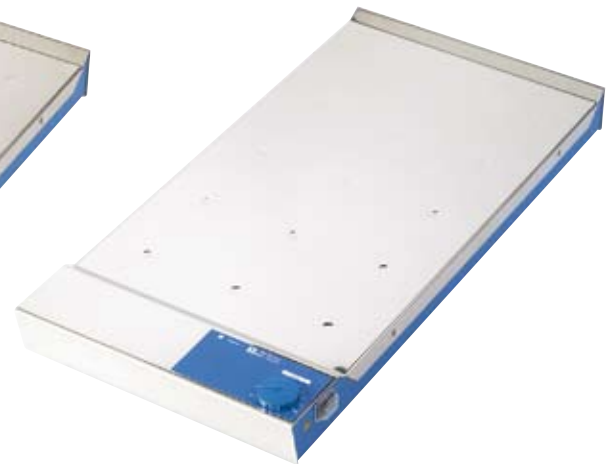
	REO basic IKAMAG®	KMO 2 basic IKAMAG®	Midi MR 1 digital IKAMAG®	Maxi MR 1 digital IKAMAG®
<b>Technical data</b>				
Stirring quantity (H <sub>2</sub> O)	20 l	5 l	50 l	150 l
Motor rating input / output	9,5 / 3,5 W	14 / 4 W	70 / 19 W	80 / 35 W
Speed display	digital	scale	digital	digital
Speed range	0 – 1.700 min <sup>-1</sup>	0 – 1.100 min <sup>-1</sup>	0 – 1.000 min <sup>-1</sup>	0 – 600 min <sup>-1</sup>
Max. magnetic bar (L x Ø)	80 x 10 mm	50 x 8 mm	80 x 10 mm	155 x 27 mm
<b>Set-up plate</b>				
Material	stainless steel (AISI 304)	stainless steel (AISI 304)	stainless steel (AISI 304)	stainless steel (AISI 304)
Dimensions	Ø 135 mm	140 x 120 mm	350 x 350 mm	500 x 500 mm
<b>General data</b>				
Dimensions (W x D x H)	160 x 270 x 85 mm	140 x 200 x 75 mm	360 x 430 x 110 mm	505 x 585 x 110 mm
Weight	2,4 kg	1,4 kg	9 kg	16 kg
Protection class acc. to DIN EN 60529	IP 42	IP 21	IP 21	IP 21
Ident. No. (230 V / 115 V)	3384200 / 3384201	2812000 / 2812001	2621900 / 2621901	2621800 / 2621801



| RO 5 power



| RO 10 power



| RO 15 power

	RO 5 power IKAMAG®	RO 10 power IKAMAG®	RO 15 power IKAMAG®
<b>Technical data</b>			
Stirring positions	5	10	15
Max. stirring quantity per stirrer (H <sub>2</sub> O)	0,4 l	0,4 l	0,4 l
Distance between stirring places	90 mm	90 mm	90 mm
Motor rating input / output	7,2 / 1,8 W	14,4 / 3,6 W	21,6 / 5,4 W
Speed display	scale (1 – 10)	scale (1 – 10)	scale (1 – 10)
Speed range	0 – 1.100 min <sup>-1</sup>	0 – 1.100 min <sup>-1</sup>	0 – 1.100 min <sup>-1</sup>
Deviation for individual stirring positions	5 %	5 %	5 %
Max. magnetic bar (L x Ø)	30 x 8 mm	30 x 8 mm	30 x 8 mm
<b>Set-up plate</b>			
Material	stainless steel (AISI 304)	stainless steel (AISI 304)	stainless steel (AISI 304)
Dimensions	120 x 450 mm	180 x 450 mm	270 x 450 mm
<b>General data</b>			
Dimensions (W x D x H)	122 x 552 x 65 mm	182 x 552 x 65 mm	272 x 552 x 65 mm
Weight	2,3 kg	3,2 kg	4,7 kg
Protection class acc. to DIN EN 60529	IP 42	IP 42	IP 42
Ident. No. (230 V / 115 V)	2930200 / 2930201	2930400 / 2930401	2930600 / 2930601

# IKA® Mixing

Electronic overhead stirrers

12



RW 11 basic off-white  
Further motifs see page 26



RW 14 basic



RW 16 basic

hot



EUROSTAR digital

	RW 11 basic „Lab egg“	RW 14 basic	RW 16 basic	EUROSTAR digital
<b>Technical data</b>				
Stirring quantity (H <sub>2</sub> O)	2 l	8 l	10 l	20 l
Max. viscosity	100 mPas	10.000 mPas	10.000 mPas	10.000 mPas
Motor rating input / output	8 / 1 W	28,5 / 17 W	75 / 55 W	75 / 55 W
Output at stirring shaft	1 W	17 W	53 W	53 W
Max. ON time	100 %	100 %	100 %	100 %
Max. torque at chuck	0,8 Ncm	8 Ncm	40 Ncm	30 Ncm
Speed range	0 – 2.000 min <sup>-1</sup>	100 – 2.000 min <sup>-1</sup>	40 – 1.200 min <sup>-1</sup>	50 – 2.000 min <sup>-1</sup>
Speed display	–	scale	scale (1 – 10)	digital
Chuck range	plug-in coupling 4 mm	0,5 – 8 mm	0,5 – 10 mm	0,5 – 10 mm
Diameter / length of extension arm	integrated	13 / 160 mm	13 / 160 mm	13 / 160 mm
<b>General data</b>				
Dimensions (W x D x H)	86 x 175 x 89 mm	70 x 176 x 197 mm	80 x 190 x 222 mm	80 x 190 x 222 mm
Weight	0,39 kg	2 kg	2,8 kg	2,8 kg
Protection class acc. to DIN EN 60529	IP 42	IP 20	IP 42	IP 42
Interface	–	–	–	–
Torque measurement	–	–	–	–
Ident. No. (230 V / 115 V)	2830001 (100 - 240 V)	3331400 / 3331401	2572100 / 2572101	2482000 / 2482001

hot



| EUROSTAR power basic



| EUROSTAR power control-visc



| EUROSTAR power control-visc 6000



| EUROSTAR power control-visc P1



| EUROSTAR power control-visc P4 / P7

basic	EUROSTAR power control-visc	EUROSTAR power control-visc 6000	EUROSTAR power control-visc P1	EUROSTAR power control-visc P4 / P7	
40 l	40 l	20 l	60 l	40 l	40 l
50.000 mPas	50.000 mPas	10.000 mPas	70.000 mPas	100.000 mPas	150.000 mPas
130 / 110 W	130 / 110 W	130 / 110 W	153 / 134 W	153 / 134 W	153 / 134 W
105 W	105 W	95 W	126 W	126 W	126 W
100 %	100 %	100 %	100 %	100 %	100 %
60 Ncm	60 Ncm	15 Ncm	100 Ncm	200 Ncm	380 Ncm
50 – 2.000 min <sup>-1</sup>	50 – 2.000 min <sup>-1</sup>	150 – 6.000 min <sup>-1</sup>	50 – 1.200 min <sup>-1</sup>	14 – 530 min <sup>-1</sup>	8 – 290 min <sup>-1</sup>
scale	digital	digital	digital	digital	digital
0,5 – 10 mm	0,5 – 10 mm	cone seat	0,5 – 10 mm	0,5 – 10 mm	0,5 – 10 mm
16 / 200 mm	16 / 200 mm	16 / 220 mm	16 / 200 mm	16 / 200 mm	16 / 200 mm
80 x 190 x 253 mm	80 x 190 x 253 mm	80 x 190 x 317 mm	80 x 190 x 253 mm	80 x 190 x 330 mm	80 x 190 x 330 mm
3,8 kg	3,8 kg	4,8 kg	4 kg	4,9 kg	4,9 kg
IP 42	IP 42	IP 42	IP 42	IP 42	IP 42
analog	RS 232 / analog	RS 232 / analog	RS 232 / analog	RS 232 / analog	RS 232 / analog
–	trend	trend	trend	trend	trend
2572200 / 2572201	2600000 / 2600001	3460000 / 3460001	3330000 (230 V)	2850000 / 2850001	2850700 / 2850701

# IKA® Mixing

Mechanical overhead stirrers

14

hot



| RW 20 digital



| RW 28 basic



| RW 28 D



| RW 47 D

	RW 20 digital	RW 28 basic	RW 28 D	RW 47 D
<b>Technical data</b>				
Stirring quantity (H <sub>2</sub> O)	20 l	80 l	80 l	200 l
Max. viscosity	10.000 mPas	50.000 mPas	50.000 mPas	100.000 mPas
Motor rating input / output	70 / 35 W	220 / 90 W	270 / 180 W	513 / 370 W
Output at stirring shaft	26 W	90 W	135 W	300 W
Max. ON time	100 %	100 %	100 %	100 %
Max. torque at chuck (per 100 min <sup>-1</sup> )	150 Ncm	900 Ncm	911 Ncm	3.000 Ncm
Speed range I (per 50 Hz)	60 – 500 min <sup>-1</sup>	60 – 400 min <sup>-1</sup>	40 – 370 min <sup>-1</sup>	57 – 275 min <sup>-1</sup>
Speed range II (per 50 Hz)	240 – 2.000 min <sup>-1</sup>	240 – 1.400 min <sup>-1</sup>	120 – 1.400 min <sup>-1</sup>	275 – 1.300 min <sup>-1</sup>
Speed display	digital	scale	scale	scale
Chuck range	0,5 – 10 mm	1 – 10 mm	1 – 10 mm	3 – 16 mm
Diameter / length of extension arm	13 mm / 160 mm	16 mm / 145 mm	16 mm / 160 mm	–
<b>General data</b>				
Dimensions (W x D x H)	88 x 212 x 294 mm	123 x 252 x 364 mm	140 x 279 x 468 mm	145 x 340 x 445 mm
Weight	3,1 kg	7,4 kg	9,3 kg	15 kg
Protection class acc. to DIN EN 60529	IP 20	IP 42	IP 54	IP 54
Ident. No. (230 V / 115 V)	3593000 / 3593001	2760000 / 2760001	3297000 (400 V) / 3297006 (230 V)	1602000 (400 V) / 1602010 (230 V)

## IKA® KS 4000 i control

New innovative incubator shaker design allowing unattended operation in a temperature-controlled environment.

- Large LED display for speed and time settings
- Controls with antimicrobial coating for reduction of bacteria
- Integrated PID temperature control (use of two PT 1000 temperature sensors)
- Junction box in the workspace for connection of an additional temperature sensor e.g. PT 1000.60
- Electronic temperature and speed control
- Electronic timer switch: 0 - 999 h (set by the minute or by the hour)
- Optional built-in cooler for connection to an external cooling unit e.g. KV 600
- Unit switches off automatically if disturbed
- Unit stops automatically when hood is lifted
- Collecting tray with drain hose on rear of unit
- Simple operation
- All functions can be controlled and documented using the labworldsoft® software
- Attachments not included – please order accessories as required

### AS 4000.1 Universal attachment

For various types of vessels. Infinitely variable clamping rolls allow universal adaptation to the vessels.



AS 4000.1  
universal attachment

### AS 4000.2 Fixing clip attachment

For shaking flasks, Erlenmeyer flasks and bottles with a round cross section, with M4 thread (without fixing clips).



AS 4000.2  
dish attachment

### AS 4000.3 Dish attachment

For smooth movement for cell cultures, nutrient media in Petri dishes, culture bottles and vessels with a low center of gravity. With integrated slipresistant foil (PP).



AS 4000.3  
fixing clip attachment



KS 4000 i control  
KS 4000 ic control

	KS 4000 i control	KS 4000 ic control
<b>Technical data</b>		
Shaking movement	orbital	orbital
Orbital diameter	20 mm	20 mm
Max. shaking weight (with attachment)	20 kg	20 kg
Motor rating input / output	82 / 24 W	82 / 24 W
Permissible ON time	100 %	100 %
Speed range	10 – 500 min <sup>-1</sup>	10 – 500 min <sup>-1</sup>
Speed display	digital	digital
Heat rating	1.000 W	1.000 W
Temperature range	RT + 5 °C - 80 °C	RT + 5 °C - 80 °C
Temperature stability (200 ml H <sub>2</sub> O at target T = 37 °C, RT 25 °C)	± 0,1 K	± 0,1 K
Temperature display	digital	digital
Timer	∞ / 0 – 999 h	∞ / 0 – 999 h
Time display	digital	digital
<b>Additional cooling function</b>		
Built-in recirculation cooler	no	yes
Temperature range at flow temperature (3 °C) KV 600	-	RT - 10 °C to 80 °C
<b>General data</b>		
Dimensions (W x D x H)	580 x 520 x 750 mm	580 x 520 x 750 mm
Weight	55 kg	55 kg
Permissible ambient temperature	15 – 32 °C	15 – 32 °C
Protection class acc. to DIN EN 60529	IP 21	IP 21
Interface	RS 232	RS 232
Ident. No.	3510000	3510100

	AS 4000.1 Universal attachment	AS 4000.2 Dish attachment	AS 4000.3 Fixing clip attachment
Ident. No.	8022200	3710100	3710000

# IKA® Mixing

## Orbital shakers

16

hot



| VORTEX Genius 3

hot



| MS 3 digital



| lab dancer



| MS 3 basic



| VXR basic Vibrax®

	lab dancer	VORTEX Genius 3	MS 3 basic	MS 3 digital	VXR basic Vibrax®
<b>Technical data</b>					
Shaking movement	orbital	orbital	orbital	orbital	orbital
Orbital diameter	4,5 mm	4 mm	4,5 mm	4,5 mm	4 mm
Max. shaking weight (with attachment)	50 ml	0,5 kg	0,5 kg	0,5 kg	2 kg
Motor rating input / output	1,2 / 0,8 W	58 / 10 W	10 / 8 W	10 / 8 W	35 / 13,2 W
Permissible ON time	100 %	100 %	100 %	100 %	100 %
Speed range	2.800 min <sup>-1</sup>	500 – 2.500 min <sup>-1</sup>	0 – 3.000 min <sup>-1</sup>	0 – 3.000 min <sup>-1</sup>	0 – 2.200 min <sup>-1</sup>
Speed display	–	scale (0 - 6)	scale	scale	scale
Timer	–	–	–	1 s – 999 min	–
<b>General data</b>					
Dimensions (W x D x H)	100 x 70 mm	127 x 149 x 136 mm	148 x 205 x 63 mm	148 x 205 x 63 mm	157 x 247 x 130 mm
Weight	0,55 kg	4,5 kg	2,9 kg	2,9 kg	6,1 kg
Permissible ambient temperature	5 – 40 °C	5 – 40 °C	5 – 40 °C	5 – 40 °C	5 – 40 °C
Protection class acc. to DIN EN 60529	IP 40	IP 21	IP 21	IP 21	IP 21
Interface	–	–	–	–	–
Ident. No. (230 / 115 V)	3365000 (100 - 240 V)	3340000 / 3340001	3617000 (100 - 240 V)	3319000 (100 - 240 V)	2819000 / 2819001



MTS 2/4 digital



KS 130 basic



KS 130 control



KS 260 control



KS 501 digital

\* without image

MTS 2/4 digital	KS 130 basic	KS 130 control	KS 260 basic*	KS 260 control	KS 501 digital
orbital	orbital	orbital	orbital	orbital	orbital
3 mm	4 mm	4 mm	10 mm	10 mm	30 mm
2 o. 4 microtiter plates	2 kg	2 kg	7,5 kg	7,5 kg	15 kg
35 / 13,2 W	45 / 10 W	45 / 10 W	45 / 10 W	45 / 10 W	70 / 19 W
100 %	100 %	100 %	100 %	100 %	100 %
0 – 1.100 min <sup>-1</sup>	80 – 800 min <sup>-1</sup>	80 – 800 min <sup>-1</sup>	20 – 500 min <sup>-1</sup>	10 – 500 min <sup>-1</sup>	0 – 300 min <sup>-1</sup>
scale	LED line	digital	LED line	digital	digital
∞ / 1 – 99 min	∞ / 5 – 50 min	∞ / 0 – 9 h 59 min	∞ / 5 – 50 min	∞ / 9 h 59 min	∞ / 0 – 56 min
185 x 320 x 105 mm	270 x 316 x 98 mm	270 x 316 x 98 mm	360 x 420 x 98 mm	360 x 420 x 98 mm	505 x 585 x 120 mm
2,7 kg	8,8 kg	9,8 kg	8,5 kg	8,8 kg	26 kg
5 – 40 °C	5 – 50 °C	5 – 50 °C	5 – 50 °C	5 – 50 °C	5 – 50 °C
IP 21	IP 21	IP 21	IP 21	IP 21	IP 21
–	–	RS 232 / analog	–	RS 232 / analog	–
3208000 / 3208001	2980000 / 2980001	2980100 / 2980101	2980200 / 2980201	2980300 / 2980301	2526400 / 2526401

# IKA® Mixing

Horizontal shakers

18



| HS 260 basic



| HS 260 control



| HS 501 digital

	HS 260 basic	HS 260 control	HS 501 digital
<b>Technical data</b>			
Shaking movement	reciprocating	reciprocating	reciprocating
Orbital diameter	20 mm	20 mm	30 mm
Max. shaking weight (with attachment)	7,5 kg	7,5 kg	15 kg
Motor rating input / output	45 / 10 W	45 / 10 W	70 / 19 W
Permissible ON time	100 %	100 %	100 %
Speed range	20 – 300 min <sup>-1</sup>	10 – 300 min <sup>-1</sup>	0 – 300 min <sup>-1</sup>
Speed display	LED line	digital	digital
Timer	∞ / 5 – 50 min	∞ / 9 h 59 min	∞ / 0 – 56 min
<b>General data</b>			
Dimensions (W x D x H)	360 x 420 x 100 mm	360 x 420 x 100 mm	505 x 585 x 120 mm
Weight	8,5 kg	8,8 kg	26 kg
Permissible ambient temperature	5 – 50 °C	5 – 50 °C	5 – 50 °C
Protection class acc. to DIN EN 60529	IP 21	IP 21	IP 21
Interface	–	RS 232 / analog	–
Ident. No. (230 V / 115 V)	3066600 / 3066601	3066700 / 3066701	2527000 / 2527001

new



ULTRA-TURRAX® Tube Drive



ULTRA-TURRAX® Workstation

Included with delivery:

- 1 x ULTRA-TURRAX® Tube Drive,
- 2 x ST-20 Tube with stirring device,
- 2 x DT-20 Tube with rotor-stator element,
- 2 x BMT-20 G / S Tube for grinding with glass balls (G) or with stainless steel balls (S), 1 x removal hook for removal the rotor-stator unit, power supply

- New:  $\gamma$ -sterilised tubes
- New: Tubes with pierceable membrane in the lid
- New: 20 ml and 50 ml tubes

For more information please visit: [www.ika.net](http://www.ika.net)

ULTRA-TURRAX® Tube Drive	
<b>Technical data</b>	
Rating input / output	20 / 17 W
Speed range, infinitely adjustable	300 – 6.000 min <sup>-1</sup>
Timer	1 – 59 s (300 – 6.000 min <sup>-1</sup> ) 1 – 29 min (300 – 4.000 min <sup>-1</sup> )
Display timer	digital
<b>General data</b>	
Dimensions (W x D x H)	100 x 160 x 40 mm
Weight	0,75 kg
Protection class acc. to DIN EN 60529	IP 20
Ident. No. (100 - 240 V)	3646000



ST-20 Tube with stirring device



DT-20 Tube with rotor-stator element



BMT-20 G / S Tube for grinding glass balls (G) or with stainless steel balls (S)

	ULTRA-TURRAX® Workstation	ST-20	DT-20	BMT-20 G	BMT-20 S
Ident. No.	3645000 (100 - 240 V)	3703000	3703100	3703200	3703300

# IKA® Crushing

Dispersers (batch operation)

20



	T 10 basic ULTRA-TURRAX®	T 18 basic ULTRA-TURRAX®	T 25 digital ULTRA-TURRAX®	T 50 basic ULTRA-TURRAX®	T 65 D ULTRA-TURRAX®
<b>Technical data</b>					
Motor rating input / output	125 / 75 W	500 / 300 W	500 / 300 W	1.100 / 700 W	1.800 / 1.500 W
Volume range (H <sub>2</sub> O)	0,5 – 100 ml	1 – 1.500 ml	1 – 2.000 ml	0,25 – 30 l	2 – 50 l
Speed adjustment	stepless	stepless	stepless	stepless	–
Speed range	8.000 – 30.000 min <sup>-1</sup>	3.500 – 24.000 min <sup>-1</sup>	3.400 – 24.000 min <sup>-1</sup>	500 – 10.000 min <sup>-1</sup>	fixed 7.200 min <sup>-1</sup>
Speed display	scale	scale	digital	scale	–
Noise without dispersing element	65 dB (A)	73 dB (A)	73 dB (A)	72 dB (A)	75 dB (A)
Overload protection	yes	yes	yes	yes	yes
<b>General data</b>					
Dimensions (W x D x H)	45 x 60 x 180 mm	65 x 80 x 240 mm	65 x 80 x 240 mm	125 x 120 x 367 mm	190 x 580 x 380 mm
Weight	0,4 kg	1,6 kg	1,6 kg	6 kg	28 kg
Permissible ambient temperature	5 – 40 °C	5 – 40 °C	5 – 40 °C	5 – 40 °C	5 – 40 °C
Permissible relative humidity	80 %	80 %	80 %	80 %	80 %
Protection class acc. to DIN EN 60529	IP 30	IP 20	IP 20	IP 20	IP 54
Ident. No. (230 V / 115 V)	3420000 / 3420001	3561000 / 3561001	3565000 / 3565001	3783500 / 3783501	1602800 (400 V) / 1602802 (230 V)

hot



| A 11 basic Analytical mill

| M 20 Universal mill

| MF 10 basic Microfine grinder drive +  
MF 10.1 Cutting-grinding head

| MF 10 basic Microfine grinder drive +  
MF 10.2 Impact grinding head

	A 11 basic	M 20	MF 10 basic + MF 10.1	MF 10 basic + MF 10.2
<b>Technical data</b>				
Motor rating input / output	300 / 160 W	440 / 225 W	1.000 / 500 W	1.000 / 500 W
Speed range	fixed 28.000 min <sup>-1</sup>	fixed 20.000 min <sup>-1</sup>	3.000 – 6.500 min <sup>-1</sup>	3.000 – 6.500 min <sup>-1</sup>
Useful volume	80 ml	250 ml	max. 5 kg / h	max. 5 kg / h
Duty cycle ON / OFF	5 min / 10 min	7 min / 10 min	120 / 30 min	120 / 30 min
Overload protection	yes	current limitation	yes	yes
Circumferential speed	53 m/s	72 m/s	22,5 m/s	31,4 m/s
Max. granularity of task	10 mm	6 - 7 mm	15 mm	10 mm
Material grinding chamber	stainless steel (AISI 316L)	stainless steel (AISI 304)	stainless steel (AISI 304)	stainless steel (AISI 304)
Material cover	-	stainless steel (AISI 304)	stainless steel (AISI 304)	stainless steel (AISI 304)
<b>General data</b>				
Dimensions (W x D x H)	85 x 85 x 240 mm	170 x 170 x 350 mm	320 x 300 x 560 mm	320 x 300 x 450 mm
Weight	1,5 kg	6,6 kg	9,7 kg + 0,8 kg	9,7 kg + 1,3 kg
Permissible ambient temperature	5 – 40 °C	5 – 40 °C	5 – 40 °C	5 – 40 °C
Permissible relative humidity	80 %	80 %	80 %	80 %
Protection class acc. to DIN EN 60529	IP 43	IP 21	IP 22	IP 22
Ident. No. (230 V / 115 V)	2900000 / 2900001	1603600 / 1603603	2836000 / 2836001 + 2870900	2836000 / 2836001+ 2871000

# IKA® Distilling

## Rotary evaporators

22



| RV 10 basic V



| RV 10 digital D



| RV 10 control V

| \* without image

• coated glasware on request available

	RV 10 basic V	RV 10 basic D*	RV 10 digital V*	RV 10 digital D	RV 10 control V	RV 10 control D*
<b>Set of glassware</b>						
Type of condenser	vertical	diagonal	vertical	diagonal	vertical	diagonal
Cooling surface	1.200 cm <sup>2</sup>	1.200 cm <sup>2</sup>	1.200 cm <sup>2</sup>	1.200 cm <sup>2</sup>	1.200 cm <sup>2</sup>	1.200 cm <sup>2</sup>
<b>Drive</b>						
Motor type	DC motor	DC motor	DC motor	DC motor	DC motor	DC motor
Motor input rating	50 W	50 W	50 W	50 W	50 W	50 W
Speed range	20 - 270 rpm	20 - 270 rpm	20 - 270 rpm	20 - 270 rpm	20 - 270 rpm	20 - 270 rpm
Speed display	digital	digital	digital	digital	digital	digital
Stroke	140 mm	140 mm	140 mm	140 mm	140 mm	140 mm
Head angle adjustable	0 - 45 °	0 - 45 °	0 - 45 °	0 - 45 °	0 - 45 °	0 - 45 °
<b>Heating bath</b>						
Heating output	1.300 W	1.300 W	1.300 W	1.300 W	1.300 W	1.300 W
Temperature range	RT - 180 °C	RT - 180 °C	RT - 180 °C	RT - 180 °C	RT - 180 °C	RT - 180 °C
Setting accuracy	scale 20 - 180 °	scale 20 - 180 °	± 1 K	± 1 K	± 1 K	± 1 K
Control deviation	± 5 K	± 5 K	± 1 K	± 1 K	± 1 K	± 1 K
Temperature display	scale	scale	digital	digital	digital	digital
<b>General data</b>						
Dimensions (W x D x H) (without glassware)	500 x 410 x 430 mm	500 x 410 x 430 mm	500 x 410 x 430 mm	500 x 410 x 430 mm	500 x 410 x 430 mm	500 x 410 x 430 mm
Weight (without glassware)	20 kg	20 kg	21,5 kg	21,5 kg	21,5 kg	21,5 kg
Permissible ambient temperature	5 - 40 °C	5 - 40 °C	5 - 40 °C	5 - 40 °C	5 - 40 °C	5 - 40 °C
Permissible relative humidity	80 %	80 %	80 %	80 %	80 %	80 %
Protection class acc. to DIN EN 60529	IP 21	IP 21	IP 21	IP 21	IP 21	IP 21
Interface	-	-	RS 232	RS 232	USB	USB
Ident. No. (230 V)	8022300	8022400	8022500	8022600	8022700	8022800



| RV 06-ML 1-B



| RV 06-ML 2-B



| RV 05 basic 1-B



| RV 05 basic 2-B

	RV 06 - ML 1 - B	RV 06 - ML 2 - B	RV 05 basic 1-B	RV 05 basic 2-B
<b>Set of glassware</b>				
Type of condenser	diagonal	vertical	diagonal	vertical
Cooling surface	1.200 cm <sup>2</sup>	1.200 cm <sup>2</sup>	1.200 cm <sup>2</sup>	1.200 cm <sup>2</sup>
<b>Drive</b>				
Motor type	DC motor	DC motor	asynchronous	asynchronous
Motor rating input / output	45 / 36 W	45 / 36 W	133 / 65 W	133 / 65 W
Speed range	10 - 240 rpm	10 - 240 rpm	46 - 260 rpm	46 - 260 rpm
Head inclination, adjustable	± 10 °	± 10 °	any	any
<b>Lift</b>				
Stroke min. / max.	74 / 155 mm	74 / 155 mm	190 mm	190 mm
Swivel feature	–	–	90 °	90 °
Max. load	10 Kg	10 Kg	10 Kg	10 Kg
<b>Heating bath</b>				
Heating output	1.000 W	1.000 W	1.000 W	1.000 W
Temperature range	RT - 225 °C	RT - 225 °C	RT - 225 °C	RT - 225 °C
Setting accuracy	± 5 K	± 5 K	± 5 K	± 5 K
Control deviation	± 5 K	± 5 K	± 5 K	± 5 K
<b>General data</b>				
Dimensions (W x D x H)	840 x 390 x 880 mm	840 x 390 x 1.130 mm	830 x 450 x 9000 mm	690 x 480 x 1.000 mm
Weight	18 kg	18 kg	12 kg	12 kg
Permissible ambient temperature	5 – 40 °C	5 – 40 °C	5 – 40 °C	5 – 40 °C
Permissible relative humidity	80 %	80 %	80 %	80 %
Protection class acc. to DIN EN 60529	IP 21	IP 21	IP 21	IP 21
Ident. No. (230 V / 115 V)	8010000 / 8010001	8010100 / 8010101	8017900 / 8017901	8018000 / 8018001

# IKA® Heating

Heating plates

24



| C-MAG HP 4



| C-MAG HP 7

hot



| C-MAG HP 10



| HCT basic (safety control)

	C-MAG HP 4	C-MAG HP 7	C-MAG HP 10	HCT basic (safety control) IKATHERM®
<b>Technical data</b>				
Motor rating input / output	255 / 250 W	1.005 / 1.000 W	1.505 / 1.500 W	640 / 600 W
Heating plate temperature range	50 - 500 °C	50 - 500 °C	50 - 500 °C	RT - 310 °C
Safety temperature	(fixed) 550 °C	(fixed) 550 °C	(fixed) 550 °C	50 - 360 °C
Temperature consistency in the medium	± 5 K	± 5 K	± 5 K	± 2 K
Control accuracy with sensor	-	ETS-D5 ± 0,5 ETS-D6 ± 0,2 K	ETS-D5 ± 0,5 ETS-D6 ± 0,2 K	PT 100± 1K / ETS-D5 ± 0,5 K ETS-D6 ± 0,2 K
Temperature display	digital	digital	digital	digital
<b>Heating plate</b>				
Material	glass - ceramics	glass - ceramics	glass - ceramics	aluminum alloy
Dimensions	120 x 120 mm	200 x 200 mm	280 x 280 mm	Ø 135 mm
<b>General data</b>				
Dimensions (W x D x H)	150 x 260 x 105 mm	220 x 330 x 105 mm	300 x 415 x 105 mm	160 x 270 x 85 mm
Weight	3 kg	5 kg	6 kg	2,5 kg
Permissible ambient temperature	5 - 40 °C	5 - 40 °C	5 - 40 °C	5 - 40 °C
Permissible relative humidity	80 %	80 %	80 %	80 %
Protection class acc. to DIN EN 60529	IP 21	IP 21	IP 21	IP 42
Ident. No. (230 V / 115 V)	3581600 / 3581626	3581800 / 3581826	3582000 / 3582026	3384100 / 3384101



ETS-D5



ETS-D6  
1 incl. BNC bushing  
2 incl. pH measurement.



1



2

	ETS-D5	ETS-D6
<b>Temperature</b>		
Temperature measuring range	- 50 – 450 °C	- 50 – 450 °C
Resolution	0,1 K	0,01 K
Measuring accuracy	± 0,2 K + Sensor tolerance PT 1000 DIN IEC 751 class A	± 0,05 K + Sensor tolerance PT 1000 DIN IEC 751 class A
Setting accuracy	0,1 K	0,1 K
Control deviation	± 0,5 K	± 0,2 K
<b>pH measurement</b>		
Measuring range	–	0 - 14 pH
Accuracy	–	± 0,1 pH
Resolution	–	± 0,01 pH
pH connection	–	BNC bushing
<b>General data</b>		
Supply voltage	8 – 16 VDC	8 – 16 VDC
Power consumption	10 mA (per 9 V)	15 mA (per 9 V)
Max. ON time	100 %	100 %
Plug	6 pin DIN 45322	6 pin DIN 45322
Connection	DIN 12878 class 2	DIN 12878 class 2
Dimensions (W x D x H)	82 x 22 x 83 mm (without sensor)	96 x 45 x 98 mm (without sensor)
Permissible ambient temperature	0 – 60 °C	0 – 60 °C
Permissible relative humidity	80 %	80 %
Protection class acc. to DIN EN 60529	IP 54	IP 54
<b>Ident. No.</b>	<b>3378000</b>	<b>3378100</b>

# IKA® »fun at work«

## COLOR SQUID

Technical data p. 8

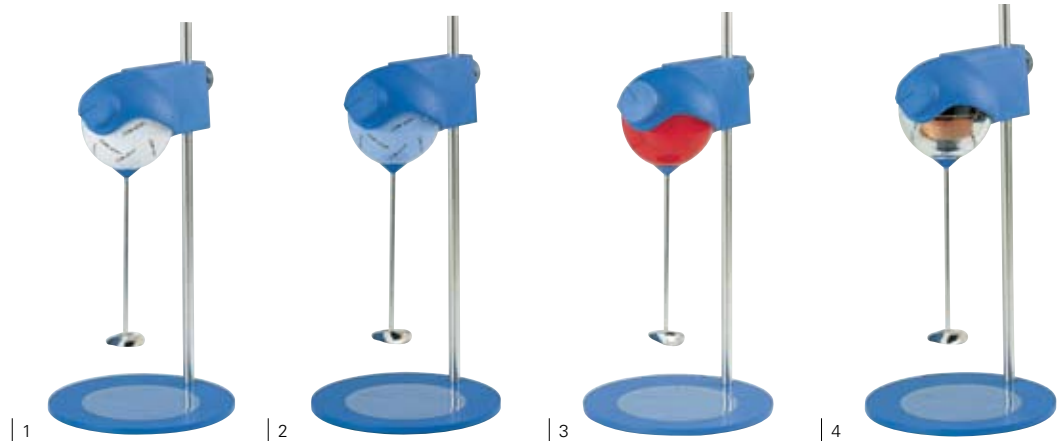
Ident. No.	Motif
1	2669917 Number one
2	2669936 Mighty Mouse
3	2669922 Wildcat
4	2669913 Zip
5	2669910 Harry's notes
6	3576600 bighead
7	3576900 balloon
8	3576000 curly
9	3576300 sunny



## RW 11 basic „Lab egg“

Technical data p. 12

Ident. No.	Motif
1	2830001 off-white
2	2830004 creamy blue
2	2830005 salmon pink
4	2830000 transparent





## BIG SQUID

| Technical data p. 8

	Ident. No.	Motif
1	3050009	White
2	3050002	Froggy
3	3050001	Star
4	3050005	IKAmäleon
5	3050004	Ocean
6	3573000	pineapple
7	3573200	strawberry
8	3573600	orange
9	3573400	kiwi



## lab disc

| Technical data p. 8

	Ident. No.	Motif
1	3277700	white
2	3362300	Sunny Side Up
3	3578000	orange
4	3578600	brown
5	3578200	green
6	3578400	pink



**Designed  
to work perfectly**

IKA® Works Guangzhou  
173-175 Friendship Road  
Guangzhou Economic and Technological  
Development Zone  
510730 Guangzhou, China

Tel: + 86 20 8222-6771, 8208-7915  
Fax: + 86 20 8208-8373, 8222-6776  
E-Mail: [asia@ikagz.com.cn](mailto:asia@ikagz.com.cn)  
[www.ika.net](http://www.ika.net), [www.ika.net.cn](http://www.ika.net.cn)

Subject to technical changes.  
Indications not binding for delivery.